

# Compact 80P and DOWCLENE 1611



The Compact Solution – also with Combined Contaminations



Ecoclean

# Compact 80P and DOWCLENE 1611



## **DOWCLENE 1611: The innovative solution for bipolar and polar contaminations**

Different cleaning requirements may be categorised by means of the chemical term "polarity". In line with the basic "clean like with like" principle, non-polar contaminations, such as pure oils and fats, are best cleaned with non-polar cleaning mediums. In the case of polar contaminations such as salts, on the other hand, the best cleaning results are achieved with water, which is also polar. Between the two extremities there is an infinite variety of bipolar cleaning tasks, because of complex manufacturing processes and high additive oils. With their innovative DOWCLENE\* 1611 product, "The Dow Chemical Company" and "SAFE-CHEM Europe GmbH" are offering a cleaning solution which guarantees outstanding cleaning results in the bipolar and polar areas. DOWCLENE\* 1611 reliably removes combined contaminations in particular, which frequently cause problems when cleaned only with water. Quickly and efficiently, the highest possible levels of cleanliness are attained. DOWCLENE\* 1611 in the secure SAFE-TAINER\*\* system is a result of the exclusive development cooperation between Dow/SAFE-CHEM and Dürr Ecoclean.

## **Compact 80P: Customized systems and process engineering from Dürr Ecoclean**

In the new Compact 80P, Dürr Ecoclean has developed a system and process concept, with all the advantages of a solvent unit, for using DOWCLENE\* 1611. Its outstanding efficiency in dealing with contaminations from polar and non-polar parts serves to convince at the cleaning between and after manufacturing processes.

Its wide range of programs places the Compact 80P in the strongest possible position to meet the high demands of the parts cleaning production stage, in the areas of quality, functionality and cost effectiveness.

The integrated tank reconditioning system with distillation process and filtration makes it possible to circulate the cleaning medium and this saves resources. Moreover, the reduced energy consumption minimises operating costs.

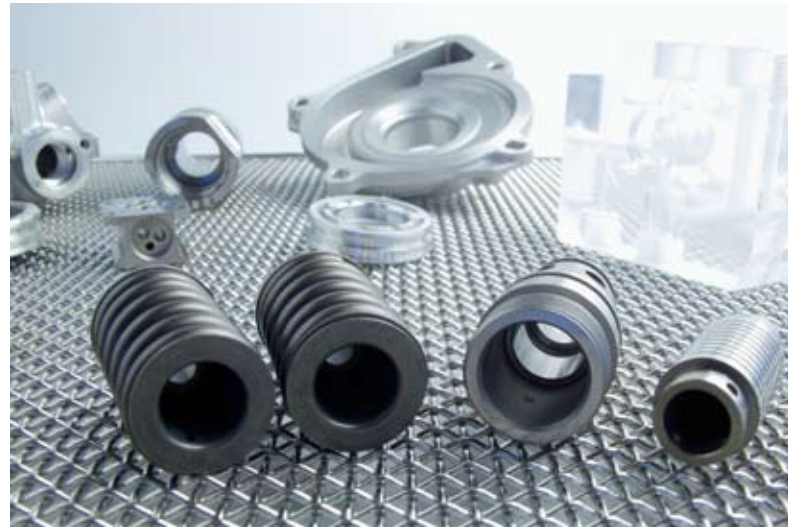
The Compact 80P with DOWCLENE\* 1611 is supplied by Dürr Ecoclean as a customized system solution from a single source.

## Equipment and Process

- Cleaning and drying process in an enclosed working chamber
- Circulation filtration
- Injection flood washing
- Manual or automatic feed of the working chamber from the front
- Automatic locking of working chamber door
- Multiple monitoring of safety-relevant temperatures and pressures in the tanks
- Rotational and swivel movement to assist cleaning and drying process
- Continuous preparation of solvents by vacuum distillation
- Continuous separation of low boiling substances and water
- Siemens S7 PLC control for individual programming of the process sequences
- Faults diagnostic by plaintext display on the control panel
- Minimised energy use by means of heat recovery
- Large maintenance and cleaning openings in the tanks
- Closed system housing with maintenance doors for optimal access

## Optional Extras

- Second flood tank for fine cleaning
- Ultrasonic device (10 or 20W/L)
- Automatic feed
- Automatic basket lid placement
- Continuous oil discharge
- Process visualization
- Modem
- Chip separation by cyclone filtration



## Advantages

- Sophisticated, redundant safety equipment
- Operation almost totally emission free, environmentally friendly process
- Air or water cooling optional
- Vacuum distillation for optimal solvent preparation
- Double solvent filtration during filling and emptying of working chamber

# Compact 80P and DOWCLENE 1611



\* registered trademark of The Dow Chemical Company  
 \*\* registered trademark of The Dow Chemical Company or its affiliated companies

## Technical Data

### Outside Dimension of the System

Width	approx. 4,120 mm (162.2")
Depth	approx. 1,600 mm (63")
Depth with automatic loading	approx. 2,950 mm (116.1")
Height	approx. 2,610 mm (102.8")
Loading height	approx. 850 mm (33.5")

### Basket

Length	approx. 530 mm (21")
Width	approx. 320 mm (12.6")
Height max.	approx. 200 mm (7.9")
Batch weight	75 kg (165 lb.)
Throughput depending on work sequence and treatment time required	approx. 10 batches/h

<b>Connected Load</b>	3x400V/50 Hz (3x480V/60 Hz)
-----------------------	--------------------------------

### Basic System

Motor power	approx. 13 kW
Heating power	approx. 9 kW
Total connected load	approx. 22 kW

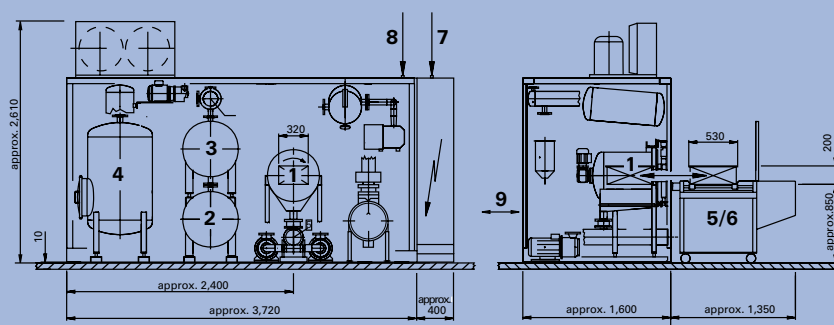
### Solvents which can be used

DOWCLENE 1601  
 DOWCLENE 1611

### Filling Capacity of Basic System

With 1 flood tank	350 l (92 gal.)
Distillation unit	approx. 170 l (45 gal.)

[www.durr-ecoclean.com](http://www.durr-ecoclean.com)



- 1 Working chamber
- 2 Flood tank I
- 3 Flood tank II (OPTIONAL)
- 4 Vacuum distillation unit
- 5 Manual feed (OPTIONAL)
- 6 Autom. feed (OPTIONAL)
- 7 Electrical feed
- 8 Compressed air feed (6 bar)
- 9 Fill/empty DN 25